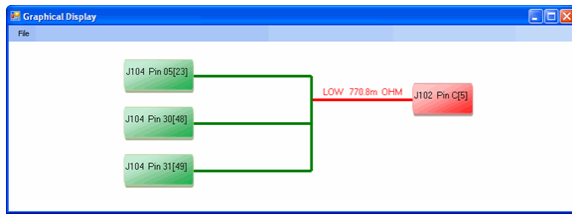


TestExecutive's® New Graphical Display Feature Gives You a New View of Wiring Test Results

Getting wiring test results that you can understand helps you quickly find the fault, shorten repair time and improve throughput.

Traditional reports list testing results in text format. DIT-MCO's TestExecutive® now offers a better way to view test results using a graphic format. Seeing the test results as an image – using the new Graphical Display feature – can improve your understanding of test results, so that you can improve your testing throughput.



The Graphical Display feature is a standard capability of TestExecutive version 5.0. There is no additional programming or data required. TestExecutive determines the circuit connectivity from the test program data.

The text view of the error report now includes a hyperlink. Click the hyperlink, and TestExecutive generates a streamlined graphic that shows you the circuit under test with any open and shorts found during testing. Simple graphics show you all of the connections that should be in the circuit and highlight the faults detected during the testing.

Sample Report: Graphics Display Demo

```

Demonstration of Graphics Display
ACT, C:\TESTFILE\GED-demo.UT
ENB, CEB, DIG, VCN, DTB
Connect product and press Advance
stp
Stop
Test Engine entered interrupt mode, press advance to continue|
f, 100v >10m, .1s, .05t
c .1a, <5r, .1s, .005t
F SMU      100V      10.00M      00.100s      00.050T
:          FF      00023          J104 Pin 05
:          00005      LOW      770.8m      OHM J102 Pin c|
Graphical Display - 1
C SMU      0.100A          5.000      00.100s      00.005T
:          CC      00100          J104 Pin 32
:          00111      HIGH      >30.00M      OHM J104 Pin 43
:          XS      00100          J104 Pin 32
:          00110      WIRED      956.5m      OHM J104 Pin 42
:          XS      00111          J104 Pin 43
:          00104      WIRED      924.3m      OHM J104 Pin 36
Graphical Display - 2
stp
Stop
Test Engine entered interrupt mode, press advance to continue
    
```

Figure 1. TestExecutive Error Log Display.

Click the [Graphical Display – 1](#) link to generate the following TestExecutive Graphical Display for the first string (Figure 2).

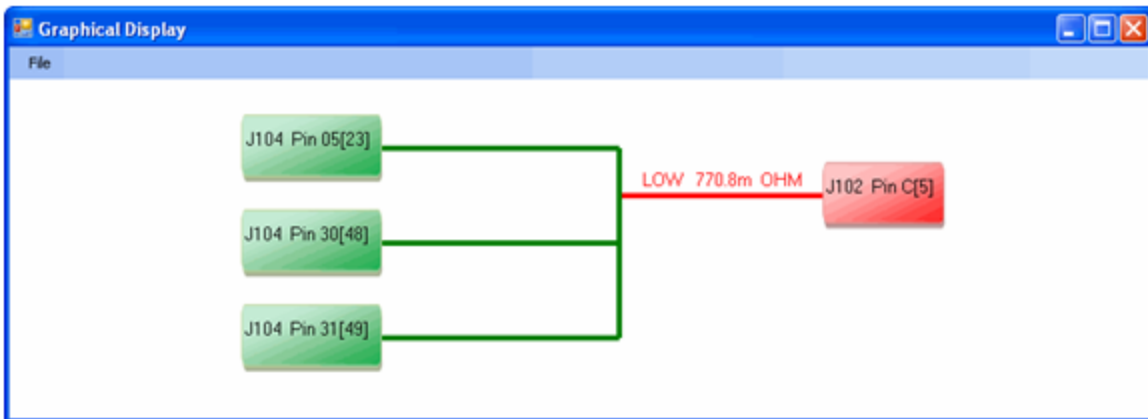


Figure 2. TestExecutive Graphical Display for string 1 showing a short circuit.

- The left side of the diagram displays the points within the net, with any shorts or mis-wired points on the right side.
- Correct connections within the circuit are displayed in green while faults are highlighted in red. Figure 2 above shows the representation of a short to the string.

Clicking the second link in the text error report – [Graphical Display – 2](#) – displays the corresponding graphic (Figure 3).

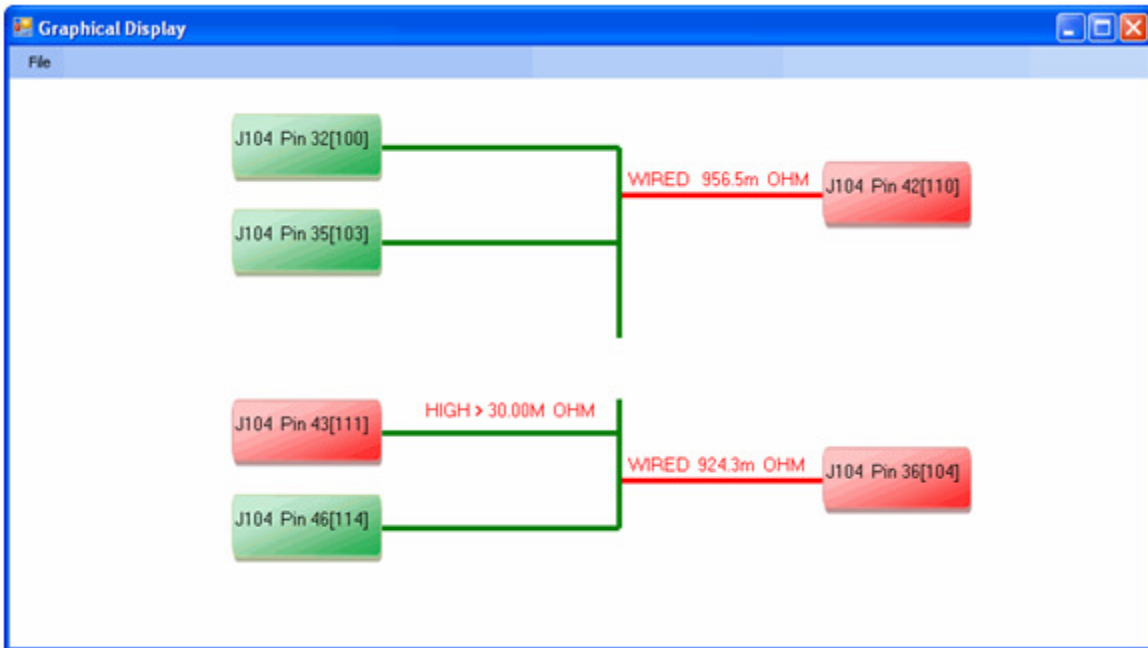


Figure 3. TestExecutive Graphical Display for string 2 showing two short circuits and one open circuit.

Additional display details include the following:

- Shorts and mis-wires are limited to a maximum of 10 entries displayed to reduce the complexity of the drawing.
- The identifiers on each end point include the ACT file definition (typically reference designator and pin name) followed by the test address of the end point. If there is no ACT information available, then only the bracketed test address will be visible.
- If the unit under test (UUT) or multiple terminal termination (MTT) information is longer than 32 characters TestExecutive will automatically shorten the display to the maximum displayable width and append ellipses (“...”) to the end of the point (Figure 4).

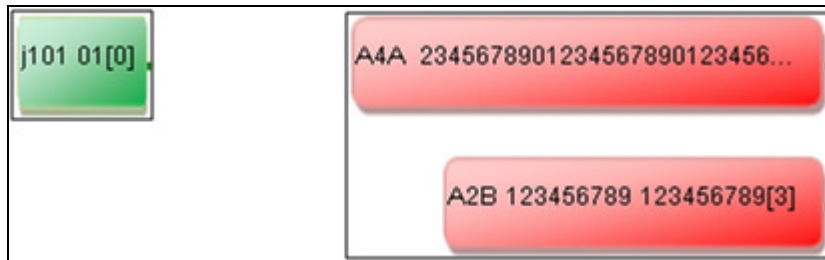
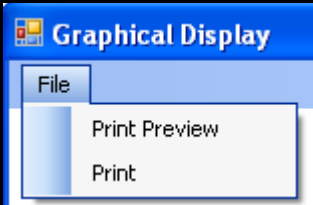
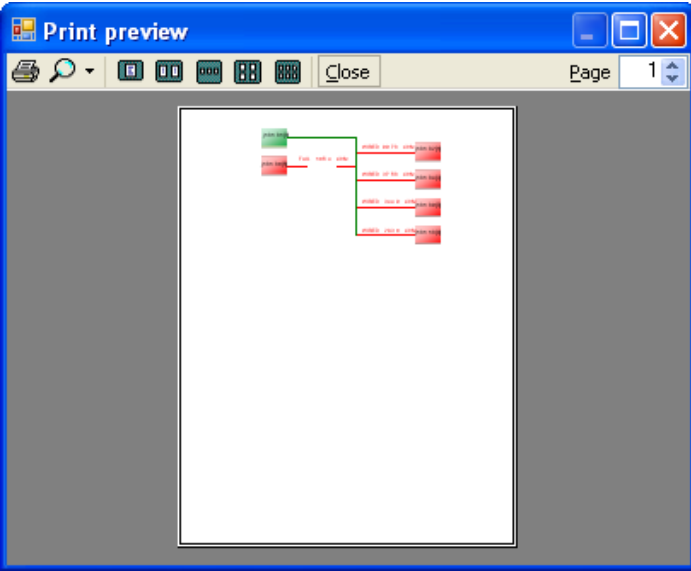


Figure 4. Example point with long UTT information.


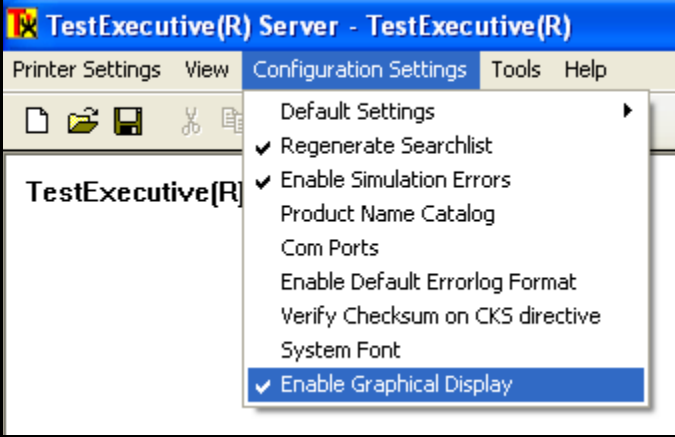
Printing Graphical Displays

 <p>TestExecutive Graphical Display Menu</p>	<p>TestExecutive Graphical Display includes support for printing the on-screen diagram. Just select the print function from the menu in the display.</p>
 <p>TestExecutive Graphical Display Print Preview</p>	<p>You can create a print preview of your document or print without confirmation. The document is automatically sent to your default printer.</p>



Graphical Display Configuration

The Graphical Display can be enabled within the TestExecutive server. This allows the system to operate using the traditional error report or using the Graphic Display option.

	<p>Right-click TestExecutive Server in the taskbar and select Maximize to navigate to the TestExecutive Server menu.</p>
 <p>TestExecutive Server menu</p>	<p>After enabling Graphical Display, links will be automatically generated in the TestExecutive error log after each net test is completed.</p>

Want to know more about TestExecutive's Graphical Display for wire test results?

Contact DIT-MCO International
Tel: +1 816 444 9700
Email: infolink@ditmco.com
Web: www.ditmco.com