

model 2115

The Model 2115 is a low cost 1500 volt circuit analyzer that provides speed, power, reliability and ease of use in a benchtop configuration. Used to test cables, harnesses, chassis and panels, you can find the Model 2115 test system in all sorts of places: right on the fabrication bench, a rack in the test department, or in the field.



The Model 2115 fits anywhere. Compact and portable, the benchtop configuration tests up to 1,000 points.

Reliability

Don't let the Model 2115's small size fool you. Its capabilities are superior to many full size systems. Built to last, this field-proven system features:

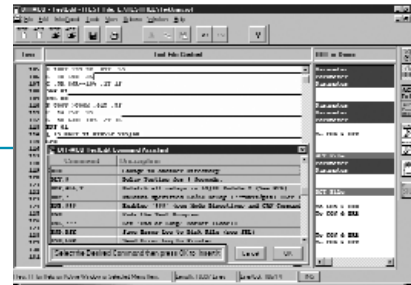
- Exclusively designed relays to improve performance and reliability by eliminating "sticky" relay problems.
- Long term cost-savings thanks to minimized maintenance and repair.
- An industrial design to withstand harsh environments.

Speed and Power

Testing up to 1500 volts, 2 amps, the Model 2115 tests wiring and components for leakage, resistance, voltage, capacitance and dielectric breakdown. With up to 5,000 tests per minute, it quickly detects the greatest number of faults before they become a costly problem in final assembly or once in use. Options provide you with the power to tailor your system to your application. It's expandable with 1,000 point enclosures. It's also flexible with options including AC dielectric withstand, remote continuity probe and bar code reader. Also available, latching matrix and power supplies for functional testing of relay and control panels.



For convenience and portability, the Model 2115 can be configured in a roll-around cabinet that can be easily moved between aisles, departments and buildings.



An easy to use text editor allows dual display of UUT names and test programs. TestEdit® can open multiple programs simultaneously for quick and easy data sharing.

Easy to Use

Windows® based software makes test programming a simple point and click operation. The built-in tutorial and on-line help shortens the learning curve. The Model 2115 supports 32-character product names so you can use familiar part names. Each test point provides a 64-character Unit Under Test (UUT) identifier for easy to understand error reports. Menu-driven control means minimal training.

Smart

The self-programming mode creates a program from a known good product reducing your time to test. Software tools find problems in your program before you try to test. Smart options include TestAssistant® II, Automatic Program Generator, and enhanced error reporting to maximize your productivity.



DIT-MCO® International

5612 BRIGHTON TERRACE • KANSAS CITY, MO 64130-4530
(800) 821-3487 • (816) 444-9700 • Fax (816) 444-9737 • Email infolink@ditmco.com • www.ditmco.com





Operating Conditions

- Relative humidity: 30%-80% (RH non-condensing)
- Indoor applications
- Standard configuration temperatures: 60°F-90°F (15°C-32°C)
- Power:
 - 115VAC1ph60Hz±10%
 - 220-250VAC1ph50Hz

Master Switching Unit

- Up to 1,000 points of switching in 50 point increments
- Expandable switching: 15,000 points added in 50 point increments and 1,000 points per enclosure
- Test speed: Up to 5,000 tests per minute
- Setup Complete ensures proper switching operation during testing
- Discharge Wait circuit prevents switching from actuating with stimulus applied
- Heavy-duty electromechanical dual "Form C" relays
- Size: 23d in x 19w in x 12h in (58 cm x 48 cm x 29 cm)
- Weight: 85 lbs (39 kg), fully loaded with optional case

Standard Instrumentation Standard Measurement Unit

- System accuracy
 - Continuity ±1%
 - Insulation ±3%
- Fully programmable
 - Voltage stimulus up to 1500VDC
 - Current stimulus up to 2A
 - Continuity resistance 0.01Ω to 99KΩ
 - Insulation up to 1GΩ

- Four-wire resistance measurement from 0.01Ω – 10Ω
- Floating instrument
- Capacitance measurements 10pF – 5000μF
- Simultaneous insulation and hipot testing
- DC dielectric (hipot) currents of 0.5 mA – 2.5mA
- DC voltage measurement
- AC voltage measurement (true RMS)

Additional Instrumentation Option

- AC dielectric detector – 1000VAC

Computer Environment

- Industry standard personal computer with Microsoft® Windows or:
 - Laptop
 - Industrial
 - Customer specified
 - Printer: Inkjet

Standard Software

- TestLink® software includes:
 - TestEdit® – Text editor for test programs and address correspondence
 - TestExecutive® with self-programming and Write Error Program (WEP)
 - Compensated Continuity Resistance (CCR)
 - Syntax Checker (SYNCHK)
 - Diagnostics

Software Options

- TestAssistant®II – Test interface and program builder
- Communications and networking
- APG/WIRESORT
- TestStats® Statistical Database
- Checksum (CHKSUM)
- Language Translators

Hardware Options

- Continuity probe
- Wireless Remote Control PDA
- External power for relay/component energization or instrumentation support
- Customer specified connector interfaces
- Latching matrix for external energization 10 – 200 points

Ideal for:

- Facilities with limited space
- Fabrication
- Field service
- Overhaul facilities/repair depots
- Flight lines
- And more!

For more information

For the name of your representative or more information on:

- Technical specifications
- Pricing
- Services
- Other products
- Authorized sales and service agents

Please contact:

(800) 821-3487

DIT-MCO International
5612 Brighton Terrace
Kansas City, MO 64130-4530
Tel (816) 444-9700
Fax (816) 444-9737
Email infolink@ditmco.com
URL www.ditmco.com

In Europe:

Tel (44) 1482 662355
Fax (44) 1482 662356